

Essential information:

Four categories of waste are eligible for collection:

1. Scrap metal and whitegoods
2. Garden organics
3. E-Waste
4. General bulky items

Separate your waste into these four piles on the kerb the weekend before collection.

Oversized and hazardous waste will be left behind.

2 cubic metres of waste is permitted per household.

Best of all, any salvageable items will be diverted from landfill!



NetWaste
A COLLABORATIVE APPROACH



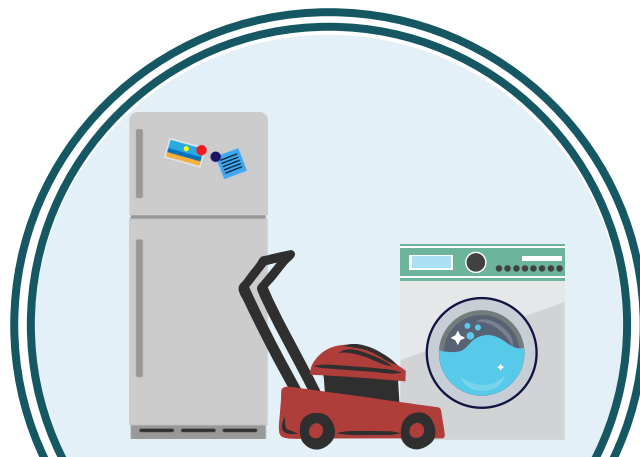
Put Waste Out
May 10-11, 2025



Collections
May 12-23, 2025



Questions
1300 725 415



Bulky Waste Collection

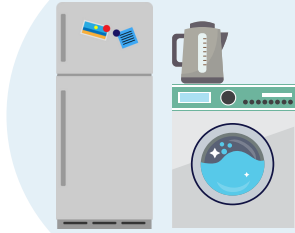


Cabonne Council
Monday, 12 May -
Friday, 23 May 2025

Acceptable Items ✓



Bikes, wheelbarrows, barbeques, scrap metal, lawnmowers (fuel removed)



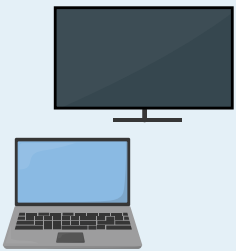
White goods & kitchen appliances (doors removed)



Untreated logs & large branches (under 25cm wide)



Prunings (under 1.8 metres long)

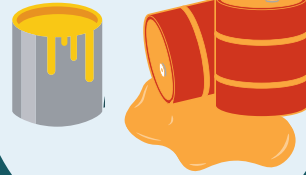


TVs, computers, printers, keyboards, monitors



Mattresses, floor coverings, furniture

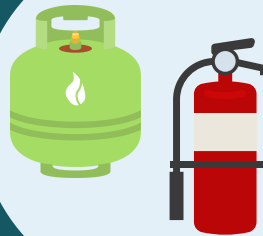
Unacceptable Items ✗



Containers with liquids



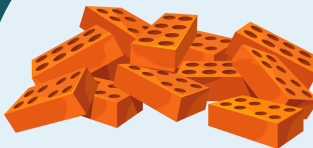
Rocks, soil, & oversized green waste



Gas bottles & fire extinguishers



Hazardous waste, chemicals, medical supplies



Construction materials, building waste, insulation, asbestos



Oversized items or piles over 2 cubic metres

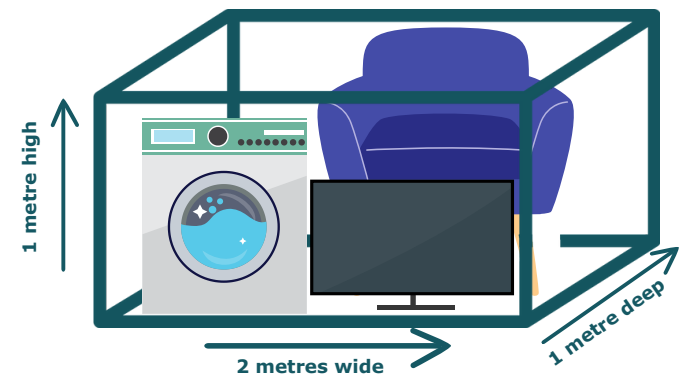
Presentation

Your waste should be placed in neat piles according to waste type, with smaller items secured or tied down.

Please keep waste off footpaths and driveways.

The combined size of the piles must not exceed two cubic metres — that's about as much as you can fit in a standard ute tray!

Maximum 2 cubic metres :



What to do about waste we don't accept:

Many of the items that aren't eligible for collection can be deposited at your local Community Recycling Centre. Search CRC to find out more!