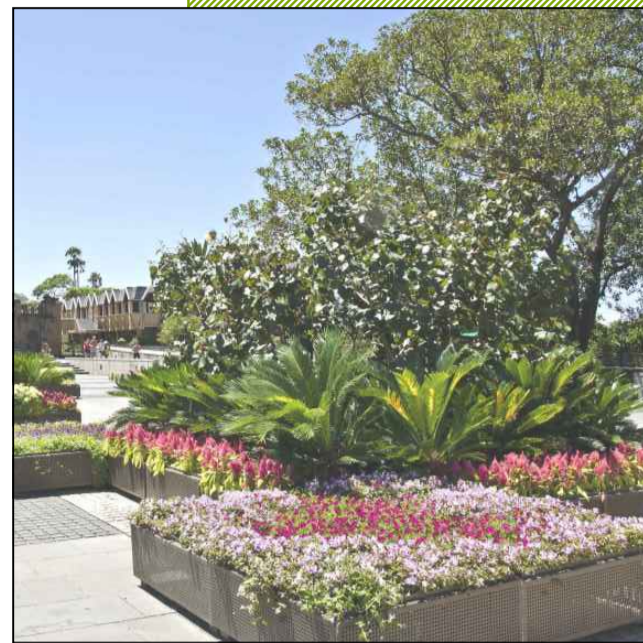


Consultation Workshop Values

Aesthetic



Amenity



Activity



Guiding Principles for Design

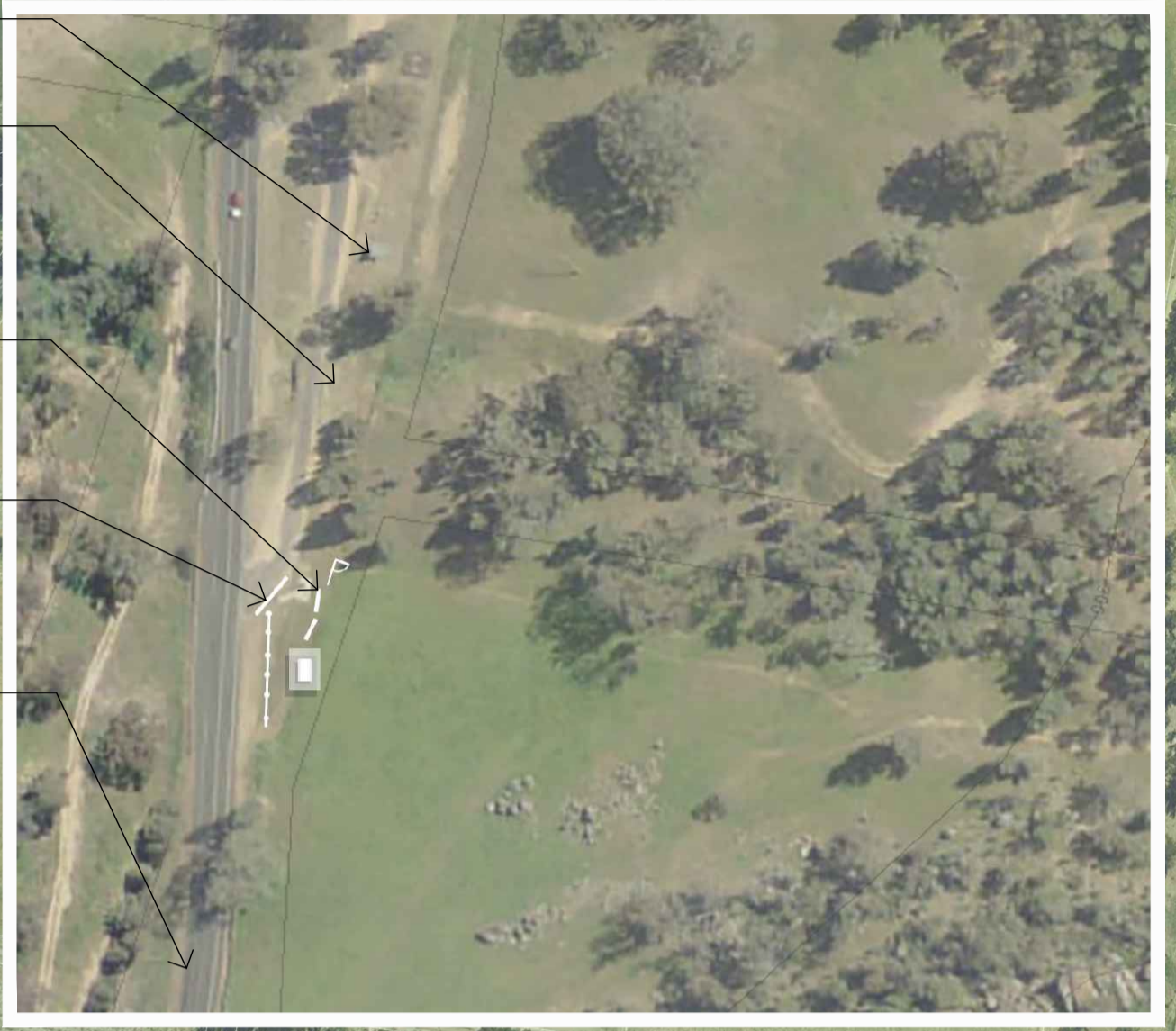
- Contemporary sculpture & furniture
- Colourful planting in urban areas
- Celebrate Eugowra's natural bush settings

- Directional & interpretive signage
- Visual & physical linkages around the creekline
- Infrastructure for outdoor social interaction

- Tourism: finding, seeing, learning
- Participating in outdoor exercise

Priority Projects in Schedule

- Escort Rock Interpretation & rest area
- Orienteering, bush walking & mountain biking in Eugowra Nature Reserve
- Mandagery Creek Walk paths and seats and sculpture trail
- Outdoor exercise equipment
- Wayfinding & Interpretative signage
- Town entrance signage and screen planting
- Sportsground covered outdoor community facility



Eugowra Town Masterplan



- Ref 2.08 - Aerate, topdress and overseed volleyball court area surface to provide a suitable playing surface for community use
- Ref 2.06 - Install a 2.0 metre wide concrete path from North Street to the toilet block to provide better access
- Ref 2.05 - Remove raised plastic edging and replace with flush concrete edging (150mm wide) adjacent to Memorial Park playground to provide access for all
- Ref 2.04 - Commission a Conservation Management Plan for Memorial Park
- Ref 2.03 - Investigate grant opportunities to replant and reinforce the historic plantings within Memorial Park and redefine the park edge to the Bowling Club (including historic research, detailed planting plans, plant supply, installation and irrigation during establishment)
- Ref 2.01 - Install a picnic shelter to Memorial Park with BBQ facilities, table seating and bin to provide amenity and encourage people to stay longer
- Ref 2.07 - Install a 2.0 metre wide concrete path from North Street to the proposed picnic shelter to provide access for all
- Ref 2.02 - Install interpretative signage about the cultural and botanic significance of Memorial Park plantings at the main entrances of Memorial Park
- Ref 2.11 - Commission detail design by consultants for Mandagery Creek Walk (under the bridge) and sculpture trail to include a 2.5 metre wide shared concrete path from Broad Street footpath to the proposed pedestrian footbridge to provide amenity, better linkages and walkability along the creek
- Ref 2.22 - Commission detail design by consultants of the Broad Street bus-stops (north and south side) to improve accessibility and user safety which includes providing an accessible path, seating and shelter
- Ref 2.12 - Install Mandagery Creek Walk and sculpture trail (under the bridge) per 2.11 (construction budget) and seek grant funding
- Ref 2.23 - Install Broad Street bus-stop per 2.22 (construction budget)
- Ref 2.19 - Re-design the safe pedestrian crossing point on Broad Street Escort Way in consultation with TfNSW to improve pedestrian safety and ensure the crossing point is compliant
- Ref 2.13 - Install pedestrian footbridge over Mandagery Creek as per construction drawings (managed by Cabonne Council and TfNSW)
- Ref 2.20 - Install mural at Byrnes Park with Eugowra granite plinth for interpretive signage, to continue promoting Eugowra as the town of murals (design, installation & marketing/ website budget)
- Ref 2.32 - Install a 2.5m wide concrete footpath along Broad Street/ Escort Way to provide amenity, better linkages and walkability through the town centre and update PAMP accordingly
- Ref 2.30 - Install wayfinding signage at key entry points along the Mandagery Creek Walk (south)
- Ref 2.26 - Install a 2.5m wide concrete footpath along Barrack Street to connect with the Mandagery Creek Walk and sculpture trail (south) to provide amenity, better linkages and walkability along the creek and through the town centre and seek grant funding
- Ref 2.41 - Provide a safe pedestrian crossing point to TfNSW standards at the corner of Nanima Street to improve safety, linkages and walkability through the town centre
- Ref 2.27 - Install picnic tables along Mandagery Creek Walk (south) to improve amenity and opportunity to appreciate scenic views
- Ref 2.28 - Install outdoor exercise equipment (entry level/everyday/ get active equipment) in grass along Mandagery Creek Walk (south) which encourages fitness trail opportunities and attracts diversity of users
- Ref 2.21 - Plant trees in groups throughout Byrnes Park to provide more shade amenity and improve town presentation
- Ref 2.24 - Commission detail design by consultants for Mandagery Creek Walk and sculpture trail (south) to include: a 2.5 metre wide shared concrete path from Broad Street to Barrack Street (to include a survey to establish land ownership boundaries and reinstatement of fences); signage; seating etc to provide amenity, better linkages and walkability along the creek and through the town centre
- Ref 2.25 - Install Mandagery Creek Walk and sculpture trail (south) per 2.24 (construction budget) and seek grant funding
- Ref 3.08 - Install seats along the Mandagery Creek Walk (east) concrete path to provide amenity especially for the elderly
- Ref 2.33 - Investigate opportunities to provide an additional shared crossing over Mandagery Creek to connect the south and east sections of the Mandagery Creek Walk and sculpture trail to provide amenity, better linkages and walkability along the creek and through the town centre, and create tourism opportunities (design and construction budget)
- Ref 3.03 - Install a 2.5m wide decomposed granite path from the sportground shared concrete path to Mandagery Creek to provide amenity, better linkages and walkability along the creek. (Path to connect with potential crossing over Mandagery Creek)
- Ref 3.14 - Install outdoor exercise equipment (entry level/everyday/ get active equipment) in grass which encourages fitness trail opportunities and attracts diversity of users
- Ref 3.07 - Install picnic tables along Mandagery Creek Walk (east) to improve amenity and opportunity to appreciate scenic views
- Ref 3.11 - Paint distance markers on the circuit footpath around the Eugowra Sportsground to encourage new users
- Ref 3.09 - Install bin at every sport ground entrance
- Ref 3.06 - Install wayfinding signage at key entry points of the Eugowra Sportsground
- Ref 3.13 - Plant trees along concrete path around the Eugowra Sportsground to provide more shade amenity
- Ref 3.18 - Regrade and resurface internal roads of the Sportsground

- Ref 2.18 - Install bin at key entry points along Mandagery Creek Walk (north)
- Ref 2.17 - Install wayfinding signage at key entry points along the Mandagery Creek Walk (north)
- Ref 2.16 - Install seats along concrete path to Mandagery Creek Walk (north) to provide amenity especially for the elderly
- Ref 2.09 - Commission detail design by consultants for Mandagery Creek Walk (north) and sculpture trail to include: a 2.5 metre wide shared concrete path from North Street to the Broad Street footpath; signage; seating etc to provide amenity, better linkages and walkability along the creek and through the town centre and update PAMP accordingly
- Ref 2.10 - Install Mandagery Creek Walk and sculpture trail (north) per 2.09 (construction budget) and seek grant funding
- Ref 2.14 - Install picnic tables along Mandagery Creek Walk (north) to improve amenity and opportunity to appreciate scenic views
- Ref 2.15 - Install outdoor exercise equipment (entry level/everyday/ get active equipment) in grass along Mandagery Creek Walk (north) which encourages fitness trail opportunities and attracts diversity of users
- Ref 2.52 - Upgrade picnic facilities at Apex Park with a new BBQ, sink, table seating, bins and bubbler to provide amenity and encourage people to stay longer
- Ref 2.31 - Install bin at key entry points along Mandagery Creek Walk (south)
- Ref 2.29 - Install seats along concrete path to Mandagery Creek Walk (south) to provide amenity especially for the elderly
- Ref 2.42 - Provide a safe pedestrian crossing point to TfNSW standards at the corner of Grevillea Avenue/ Escort Way to improve safety, linkages and walkability through the town centre
- Ref 2.43 - Investigate opportunities to extend kerb alignment at the corners of Nanima Street through line marking in consultation with TfNSW and Council to improve pedestrian safety and encourage slower vehicle speeds (concept design by consultants)
- Ref 2.45 - Install tree planter pots with irrigation reservoir, ornamental tree planting and solar fairy lights on the corners of Nanima Street
- Ref 2.40 - Provide a safe pedestrian crossing point to TfNSW standards outside the pharmacy on Pye Street to improve safety, linkages and walkability through the town centre
- Ref 2.44 - Investigate opportunities to line mark (with patterns and colour) the street between the raised planters and refurbish the planters including planting along Nanima Street in consultation with TfNSW and Council to create a flexible shared street for community events and activities (concept design by consultants)
- Ref 3.01 - Commission detail design by consultants for Mandagery Creek Walk and sculpture trail (east) to include: a 2.5 metre wide shared concrete path from the footbridge around the perimeter of oval to surrounding streets; signage; seating etc to create a village green, provide amenity, better linkages and walkability along the creek and through the town centre
- Ref 3.02 - Install Mandagery Creek Walk and sculpture trail (east) per 3.01 (construction budget) and seek grant funding
- Ref 3.21 - Investigate opportunities with RFS to re-use existing shed for community purposes and storage
- Ref 3.19 - Rationalise entrance to sportsground incorporating a mural, tree and native shrub planting to improve town presentation, provide visual linkages and create a village green community for local events and activities
- Ref 3.20 - Install mural at Sportsground with Eugowra granite plinth for interpretive signage, to continue promoting Eugowra as the village of murals (design, installation & marketing/ website budget)
- Ref 3.15 - Install a FRP mesh boardwalk over the stormwater channel to improve linkages and walkability through the town
- Ref 3.10 - Prepare ground adjacent existing club house and provide infrastructure to facilitate mobile toilets & change rooms etc to support events and create flexible spaces
- Ref 3.04 - Commission detail design by consultants for a covered outdoor community facility including: outdoor courts; ball wall; basketball hoop with backboard; female change rooms; barbeque facilities; tables; carparking; and tree planting
- Ref 3.22 - Commission detail design by consultants for 6-12 year old playground which integrates with the youth facility
- Ref 3.23 - Install playground per 3.22 (construction budget)
- Ref 3.05 - Install clubhouse/ flexible youth facility per 3.04 (construction budget)
- Ref 3.12 - Install small youth shelters for casual hanging out, perching and greater opportunities to gather and socialise at the edges of skate ramp in the Eugowra Sportsground
- Ref 3.17 - Upgrade sports lighting which includes: decommissioning the old electrics, removing redundant infrastructure; installing new poles and lights
- Ref 2.47 - Plant trees along Nanima Street to provide more shade amenity



Ref 2.56 - Install 2.5m wide shared concrete path along Nanima Street (from Pye Street to Oberon Street) to provide better linkages and walkability throughout the town centre

Ref 2.54 - Plant trees along Pye Street to provide more shade amenity

Ref 3.16 - Provide a safe pedestrian crossing point to TfNSW standards across Nanima Street to improve safety, linkages and walkability through the town centre

Ref 2.39 - Install bin at key entry points of the parkland between Nanima Street and Pye Street

Ref 2.38 - Install seats along parkland concrete path between Nanima Street and Pye Street to provide amenity especially for the elderly

Ref 2.37 - Install wayfinding signage at key entry points to the parkland between Nanima Street and Pye Street

Ref 2.35 - Install a 2.5m wide shared concrete path through the parkland between Evelyn Street and Pye Street to provide amenity, better linkages and walkability through the town centre

Ref 2.36 - Plant trees in groups throughout the parkland between Nanima Street and Pye Street to provide more shade amenity

Ref 2.46 - Plant trees along Evelyn Street including replanting to the centreline to provide more shade amenity

Ref 2.34 - Install a 2.5m wide shared concrete path through the parkland between Nanima Street to Evelyn Street to provide amenity, better linkages and walkability through the town centre

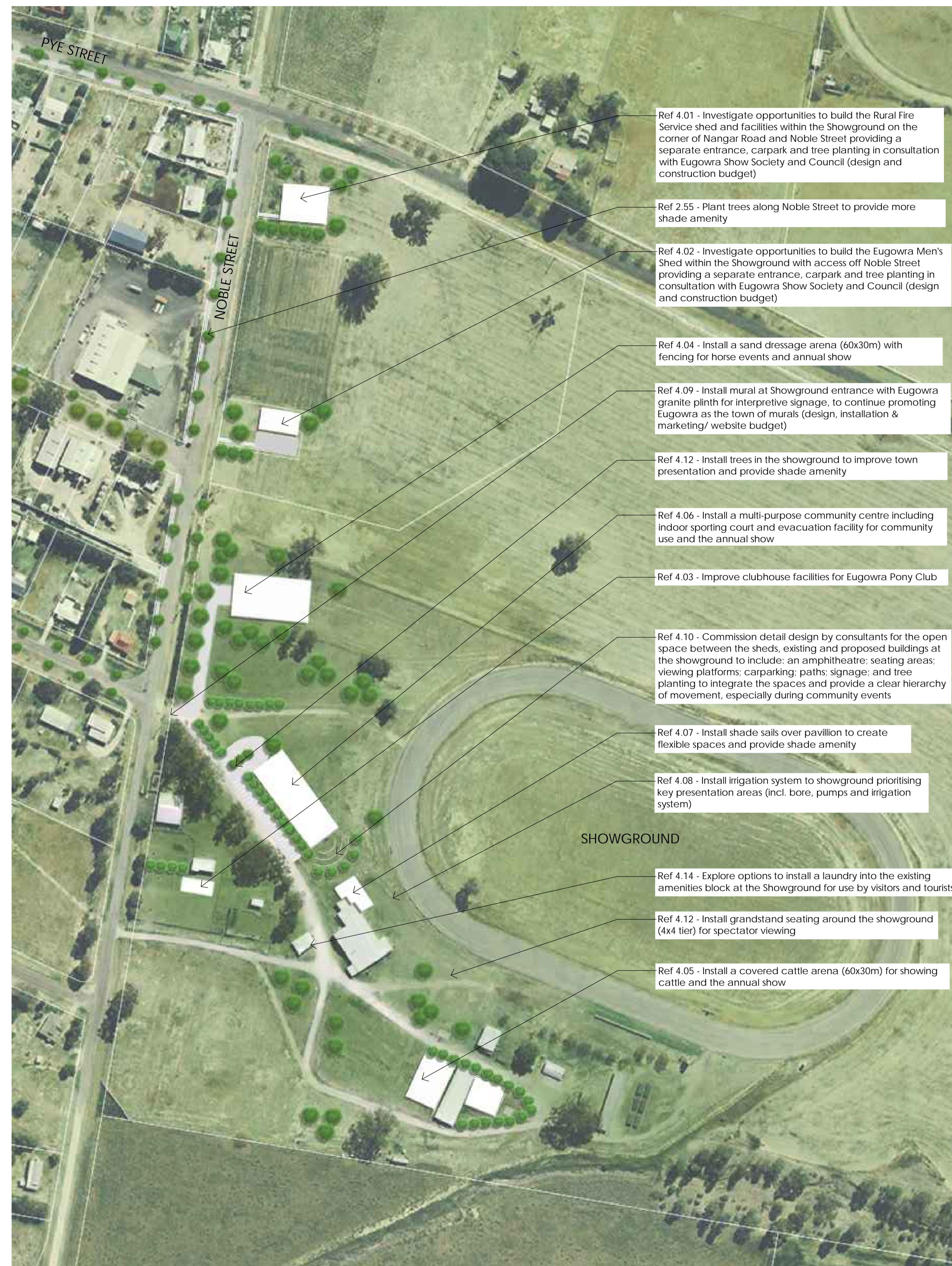
Ref 2.50 - Investigate opportunities to install an irrigation system within the pool grounds in consultation with Council to improve amenity

Ref 2.49 - Plant trees within pool grounds to improve shade amenity

Ref 2.48 - Upgrade barbeque, picnic and seating facilities within the pool grounds to improve amenity and encourage people to stay longer

Ref 2.51 - Install shade sails over pool to provide shade amenity

Ref 2.53 - Plant trees along Oberon Street including replanting to the centreline to provide more shade amenity



Ref 4.01 - Investigate opportunities to build the Rural Fire Service shed and facilities within the Showground on the corner of Nangar Road and Noble Street providing a separate entrance, carpark and tree planting in consultation with Eugowra Show Society and Council (design and construction budget)

Ref 2.55 - Plant trees along Noble Street to provide more shade amenity

Ref 4.02 - Investigate opportunities to build the Eugowra Men's Shed within the Showground with access off Noble Street providing a separate entrance, carpark and tree planting in consultation with Eugowra Show Society and Council (design and construction budget)

Ref 4.04 - Install a sand dressage arena (60x30m) with fencing for horse events and annual show

Ref 4.09 - Install mural at Showground entrance with Eugowra granite plinth for interpretive signage, to continue promoting Eugowra as the town of murals (design, installation & marketing/ website budget)

Ref 4.12 - Install trees in the showground to improve town presentation and provide shade amenity

Ref 4.06 - Install a multi-purpose community centre including indoor sporting court and evacuation facility for community use and the annual show

Ref 4.03 - Improve clubhouse facilities for Eugowra Pony Club

Ref 4.10 - Commission detail design by consultants for the open space between the sheds, existing and proposed buildings at the showground to include: an amphitheatre; seating areas; viewing platforms; carparking; paths; signage; and tree planting to integrate the spaces and provide a clear hierarchy of movement, especially during community events

Ref 4.07 - Install shade sails over pavilion to create flexible spaces and provide shade amenity

Ref 4.08 - Install irrigation system to showground prioritising key presentation areas (incl. bore, pumps and irrigation system)

Ref 4.14 - Explore options to install a laundry into the existing amenities block at the Showground for use by visitors and tourists

Ref 4.12 - Install grandstand seating around the showground (4x4 tier) for spectator viewing

Ref 4.05 - Install a covered cattle arena (60x30m) for showing cattle and the annual show